

A silver flute is positioned diagonally across the frame, resting on a sheet of musical notation. The flute's keys and body are highly reflective. To the left of the flute, a large, vibrant pink flower with green leaves is partially visible. The background is filled with musical staves, including notes, rests, and dynamic markings such as 'poco', 'molto cresc', 'poco rit.', 'pp', 'p', 'mf', and 'mp'. The overall composition is artistic and musical.

Polly Put The Kettle On

**Sheet Music
for
Flute**

Polly Put The Kettle On

for Flute

Traditional / English nursery rhyme

Key of C

Arranged for Flute by Andrew Scott

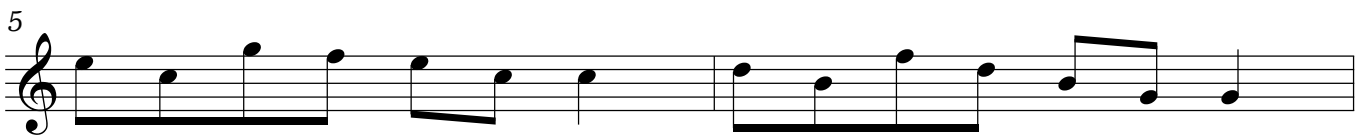
♩ = 115



Pol - ly put the ket - tle on, Pol - ly put the ket - tle on,



Pol - ly put the ket - tle on we'll all have tea.



Su - ki take it off a - gain, Su - ki take it off a - gain



Su - ki take it off a - gain we'll all have none.



Pol - ly put the ket - tle on, Pol - ly put the ket - tle on,



Pol - ly put the ket - tle on we'll all have tea.



[More Sheet Music for Flute
at MasterpieceMusic.org](http://MasterpieceMusic.org)